

Building 109

Hall County Airport Authority Industrial Park
 Central Nebraska Regional Airport (GRI)

3821 Sky Park Road
 Grand Island, NE 68801

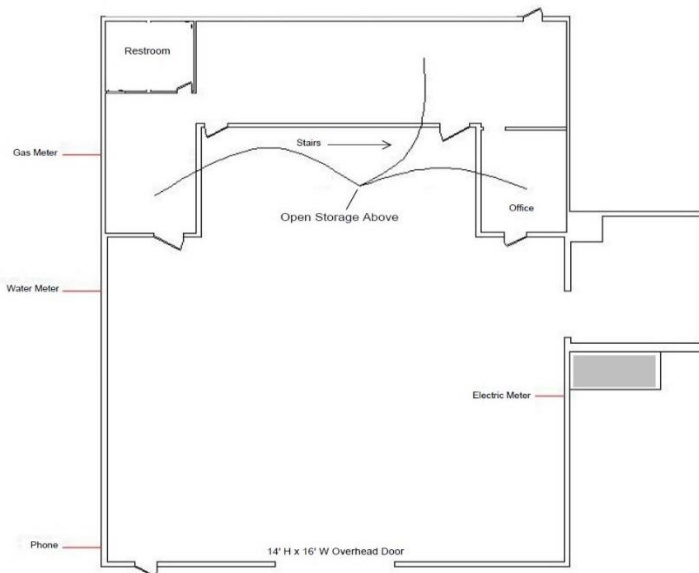
Property Description:

Industrial/Warehouse facility with office space, storage loft, with off street parking and easy access. Building is constructed of wood with sheetmetal exterior & interior, concrete floors, open joist ceiling with a 14'Hx16'W Overhead Door.

Rent: \$1,100.00/mo. | Plus \$102.42 mo. Fire & Extended Insurance Coverage | TOTAL \$1,202.42/mo.

Property Details

Parcel Number: 400187531
 Total Square Foot: 5,416
 Open Storage sq ft: 4,008
 Office sq ft: 1,408
 Power: 480 V 3-Phase
 208 V 3-Phase
 Overhead Door: 14'Hx16'W
 Restrooms: Yes
 Water: Yes
 Sewer: Yes
 Gas: Yes
 Year Built: 1943
 Lot Size:
 Zoning Description: M2-Heavy
 Mfg Zone
 Estimated
 Taxes: \$1,618.72



Contact the Hall County Airport Authority

3855 Sky Park Road
 Grand Island, NE 68801
 (308) 385-5170 x 110

